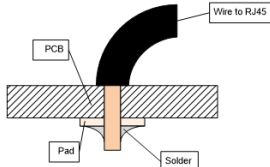


SmartSensor RJ45 upgrade

1. Solder wire from the designated pads on the PCB to the designated pins on the RJ45 connector



2. Make a cutout for the RJ45 connector in the box, make sure that there are space in the box underneath the cutout for the connector

3. Glue in the connector

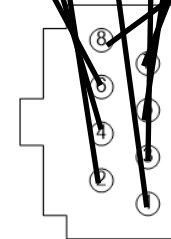
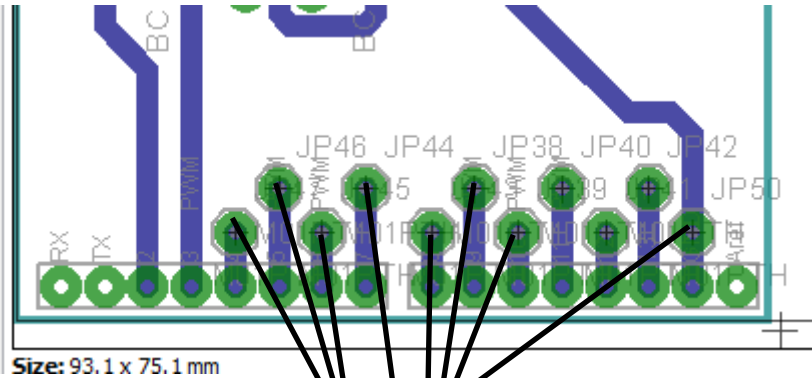
4. Wire up the startlight as



5. Start the sensor and the Startlight should work.

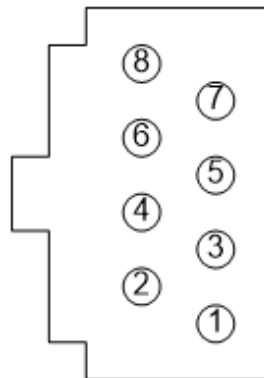


Board V1—PCB



RJ45 connection (Top view)

Arduino	RJ45
4	6
5	4
6	2
7	1
8	3
9	5
10	7
GND	8



Board V2—PCB

